

## Intepreting ImPACT Test Results

### 1. Course Description

This course will provide a deep dive into the ImPACT Applications clinical reports. Participants will learn how to understand the clinical report, what the numbers mean and what to look for.

### 2. Speaker

Melissa N. Womble, Ph.D.

### 3. Contact Hours

1

### 4. Cost

Free

### 5. Registration Link

[ConcussionCareTraining.com](https://ConcussionCareTraining.com)

### 6. Target Audience

Physicians, Nurse Practitioners, Physician Assistants, Psychologists, Athletic Trainers,  
Physical Therapists, Occupational Therapists, Chiropractors

### 7. Location/Format

Live Webinar

## Intepreting ImPACT Test Results

### 8. Learning Objectives

(Achievement assessed through post-course evaluation/quiz) At the end of this course, the learner will:

1. Identify how subtest scores are utilized to compute composite scores
2. Evaluate overall performances and determine where strong/weak scores were obtained
3. Compare baseline and post-injury performances using RCIs
4. Interpret results comprehensively in the context of other information obtained

### 9. Educational Level

Beginner / Introductory / Essential

### 10. Course Outline

- I. Review ImPACT components
- II. Review validity markers
- III. Review target scores
- IV. Review RCIs
- V. Discuss case examples demonstrating things to look out for



ConcussionManagement.com

## More Information

---

### Intepreting ImPACT Test Results

#### CE Credits Offered:

##### Athletic Trainers

ImPACT Applications, Inc. (BOC AP# P3429) is approved by the Board of Certification, Inc. to provide continuing education to Athletic Trainers. This program is eligible for a maximum of 1 Category A hours/CEUs. ATs should claim only those hours actually spent in the educational program.

##### Physicians

ImPACT Applications, Inc. is accredited by the Accreditation Council for Continuing Medical Education (ACCME) to provide continuing medical education for physicians.

##### AMA Credit Designation Statement

ImPACT Applications, Inc. designates this live activity for a maximum of 1 *AMA PRA Category 1 Credit(s)*<sup>™</sup>. Physicians should claim only the credit commensurate with the extent of their participation in the activity.





*ConcussionManagement.com*

# More Information

---

## Intepreting ImPACT Test Results

### Course Completion Requirements

Learners must do the following to receive a valid statement of credit or certificate:

Watch the live presentation

Complete the course quiz (80% minimum passing score) and satisfaction survey

### Attendance Requirements

Attendees should claim only those hours actually spent in the educational program.

### Prerequisites

None

### Healthcare Provider Applicability

Available upon request. Please email [training@impacttest.com](mailto:training@impacttest.com) to request.

### Special Needs Requests

Participants who have special needs are encouraged to contact program organizers so that all reasonable efforts to accommodate these needs can be made.

### Included with Registration

Access to recording of the webinar for 48 hours after the live session

Presenter contact information available on request

### Required Materials

ImPACT Applications training dashboard login

### Speaker Standards

Statements and opinions contained in this presentation are solely those of the presenter.

Treatments and tools presented today are some of many that are available.

Presenters have agreed to demonstrate high standards of professional conduct and will not discriminate against learners on the basis of gender, age, socioeconomic or ethnic background, sexual orientation, or disability.

ImPACT Applications owns the slides presented. Attendees may not use any materials presented without written permission from ImPACT Applications.



[ConcussionManagement.com](http://ConcussionManagement.com)

## More Information

---

### Intepreting ImPACT Test Results

#### Complaint Policy

When a participant, either verbally or in written format, files a grievance and expects action on the complaint, the following actions will be taken.

If the grievance concerns a speaker, the content presented by the speaker, or the style of presentation, the individual filing the grievance will be asked to put his/her comments in written format. The planning committee will then pass on the comments to the speaker, assuring confidentiality.

If the grievance concerns a workshop, its content, level of presentation, or the facilities in which the workshop was offered, the planning committee will mediate and will be the final arbitrators. If the participant requests action, the final arbitrator will follow the standard cancellation and refund policies.

If the grievance requires a resolution, a member of the planning committee will take necessary action.

Please contact ImPACT Applications at [training@impacttest.com](mailto:training@impacttest.com), (877) 646-7991 ext. 908, or +1 (412) 567-8400 to submit a complaint, or if you have additional questions.

#### Commercial Support

Currently, ImPACT Applications does not accept commercial support for any continuing education programs.

#### Conflict of Interest Policy

Available upon request

All individuals in control of content disclosed **no relevant financial relationships**.

The planning committee identified **no conflicts of interest** for this course.

#### Commercial Bias

The intent of this course is to promote improvements in the management of concussion. Attendees are encouraged to inform the course planning committee through the course evaluation if any commercial bias is detected.

#### Cancellation Policy

**By the Learner:** You may not cancel a video on-demand purchase. The course is available for 6 months after purchase and the individual may watch it at any time. If you are unsatisfied with the course, please contact [training@impacttest.com](mailto:training@impacttest.com) to receive credit towards another course of equal or lesser value.

**By ImPACT:** If ImPACT Applications removes a course from its video on-demand library, they will first offer the individual a credit toward another course of equal value. If the individual does not want another course, the provider will refund the registration fee for the course.

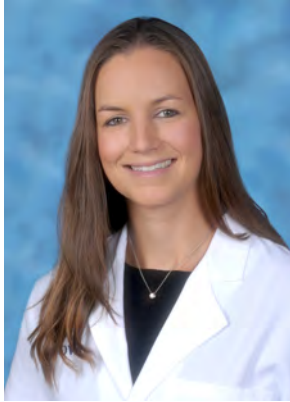


*ConcussionManagement.com*

## More Information

---

### Intepreting ImPACT Test Results



**Melissa N. Womble, Ph.D.**

Director of Inova Sports Medicine  
Concussion Program

Dr. Melissa Womble is a fellowship-trained neuropsychologist with specialization in sport concussion management. She currently serves as Director of the Inova Sports Medicine Concussion Program and Co-Director of the Inova Concussion Program with offices in Fairfax and Sterling, Virginia. Dr. Womble joined Inova Medical Group in August 2016 after completing a neuropsychology post-doctoral fellowship within the University of Pittsburgh Medical Center's Sports Medicine Concussion Program. An accomplished high school track athlete, Dr. Womble took her passion for competitive sports to the University of South Alabama (USA) where she competed as an NCAA Division I cross country and track athlete while earning her Bachelor's degree in psychology. She went on to receive a Master's degree in applied psychology and a Doctoral degree in combined-integrated clinical and counseling psychology, both at USA. During her doctoral studies, Dr. Womble provided sports enhancement therapy for collegiate athletes and also developed a concussion management program for collegiate and high school athletes. She completed a pre-doctoral internship at Henry Ford Medical Center in Detroit, MI, where she continued to develop her interest in traumatic brain injuries and furthered previous neuropsychology training before moving on to her fellowship experience in Pittsburgh. Dr. Womble has presented at national conferences and published in numerous peer-reviewed journals.